

# GANTT CHART Generator

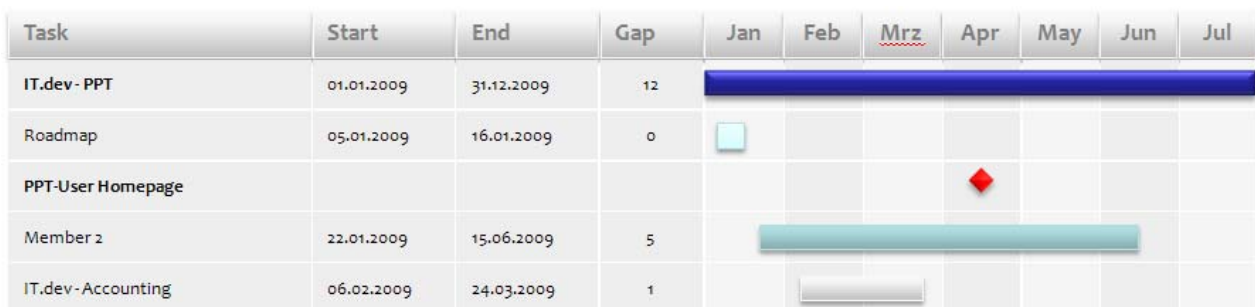
Copyright (C) 2007-2010, stallwanger it.dev | process and controlling. All rights reserved.

## Introduction:

Gantt charts are often used to visualize different activities within a specific time period.

Gantt charts are primarily used by project managers and team members to coordinate the project processes and workflows. Through simple visualization, Gantt charts can be used in all business areas.

Example: Gantt chart with activities and the timeline in months.



In general, you need lot of resources and a lot of time to generate these diagram types and to maintain them, especially if want to implement them in Microsoft PowerPoint.

Therefore, we decided to develop a Gantt Chart generator for PowerPoint, where you can easily manage the data in an Excel Spreadsheet document and visualize it later in PowerPoint.

The Gantt Chart generator is not a full software solution. It will be understood as an additional software solution or Add-in function, where you can save time entering manually shapes, rectangles, text elements and animation effects in your PowerPoint presentation.

## Requirements:

The Gantt Chart Generator was developed with Microsoft Office 2002 (SP2) and with the operation Systems Windows XP. We tested it in Office 2003 and Office 2007.

- Minimum: Microsoft Excel 2002 **and** Microsoft PowerPoint 2002 or higher.

## Quick start:

---

The file gantt.xls is your example Data file with the structure for your Gantt chart. You can enter your own values.

The file gantt.ppt contains a macro with the settings options to generate the Gantt chart.

- Open the file gantt.ppt
- Start the Macro AddGantt. That's all.

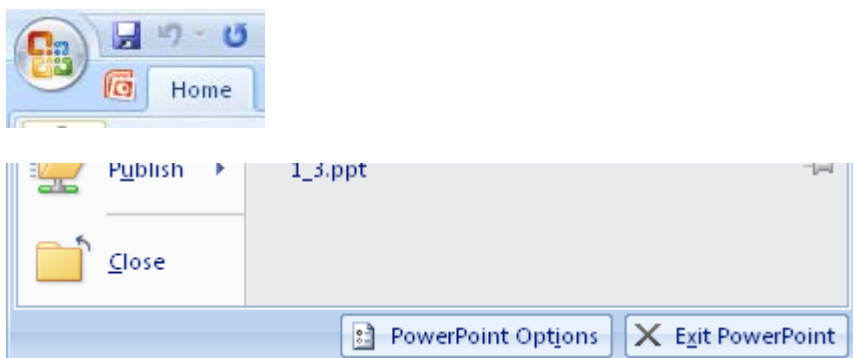
## Activate or Settings of your Macro:

---

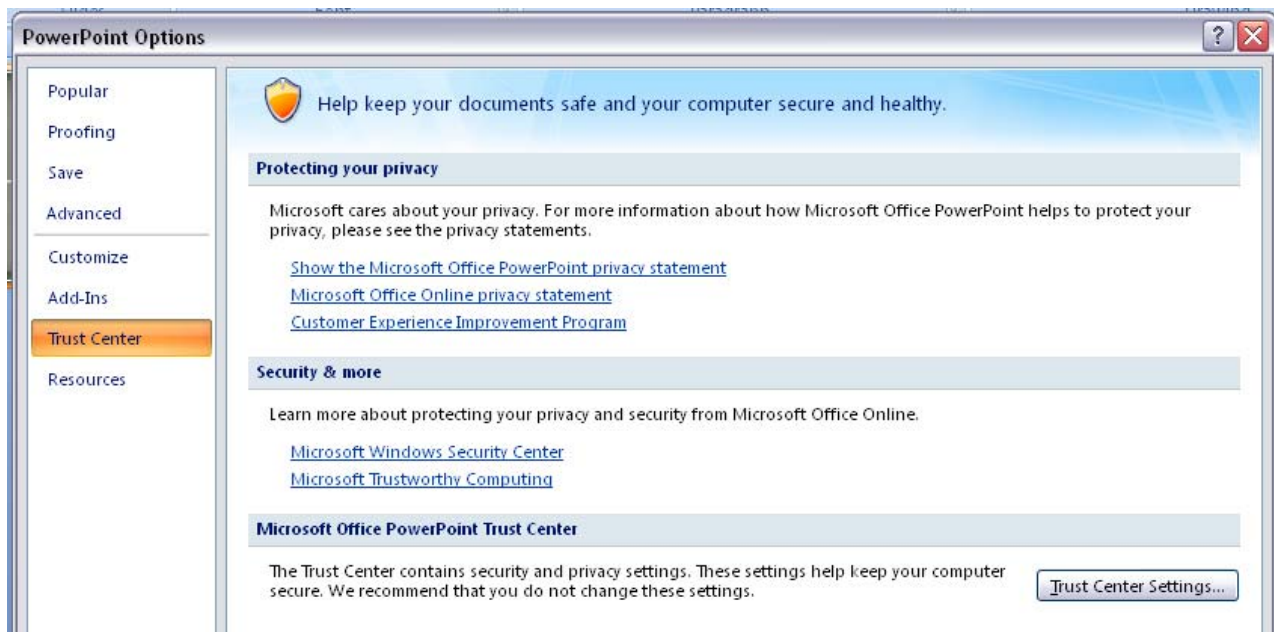
### Settings for Office 2007 products

Start your PowerPoint 2007 Application.

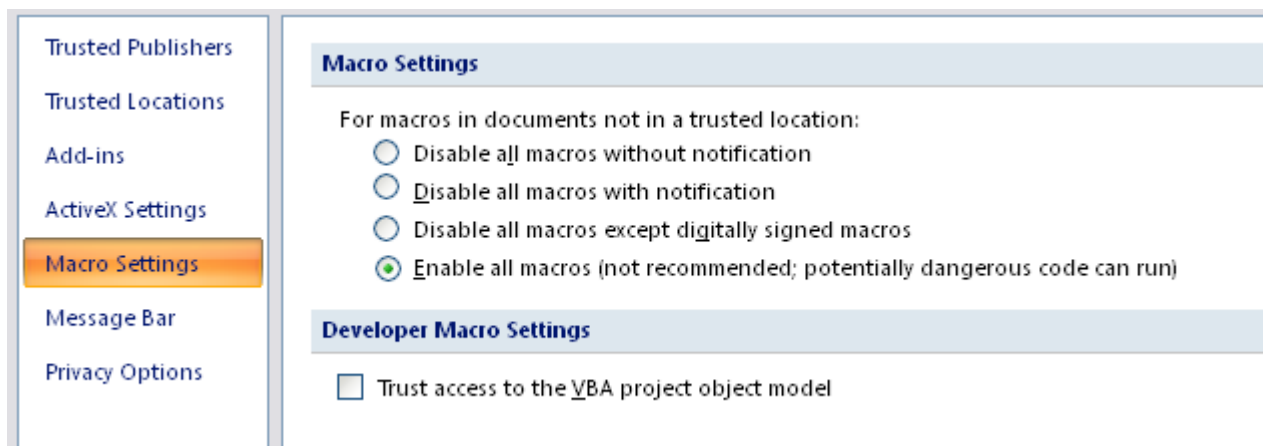
Before you open your file, click on your Start – Button (Microsoft Symbol) in the Program Window on the top left side and select the button PowerPoint-Options.



In the next Window you will see on the left side the option “Trust Center” – click on it. Press the Button “Trust Center Settings”.



In the next Dialog window you can select the options „Enable all macros“. This setting is only for **stallwanger.net** macros. For other Software Companies please ask what this macros does or ask your IT service provider.

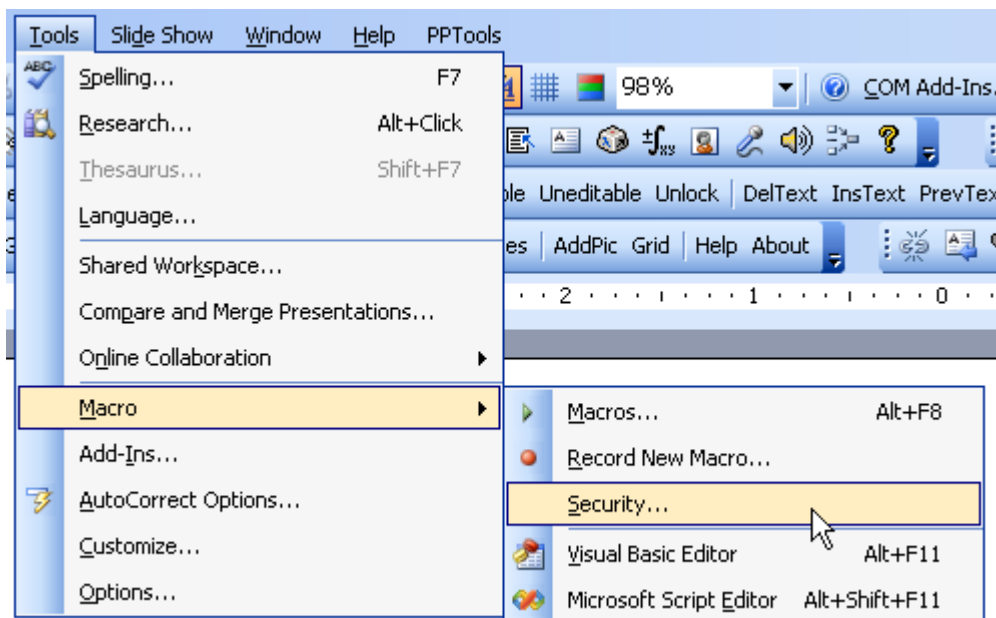


Close any open dialog boxes with “OK”. Now you can use the macro in the file gantt.ppt „AddGantt“.

**Tip:** you can also run or start macros in PowerPoint by using the keyboard combination (ALT + F8).

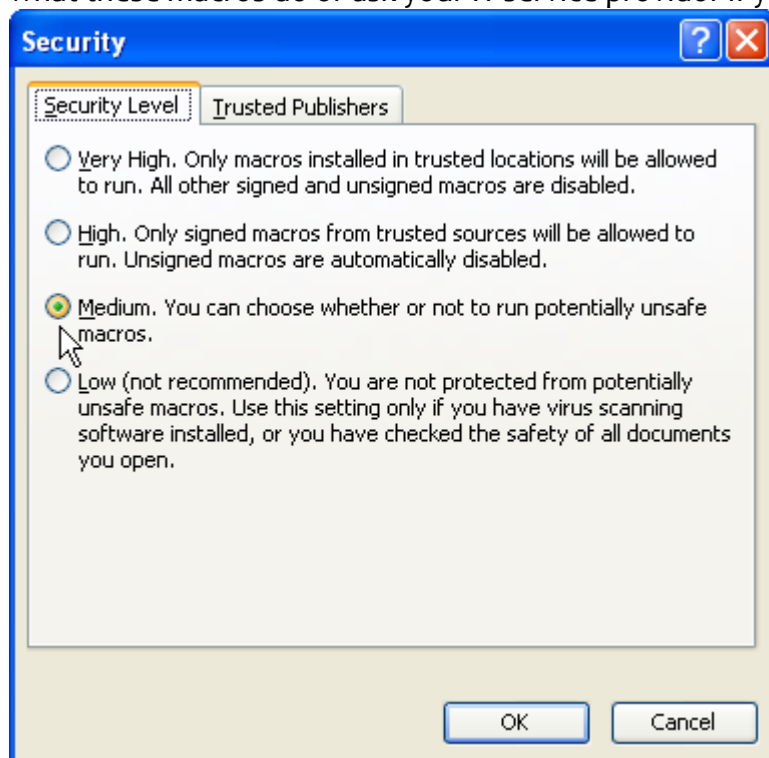
### Settings for Office 97 till 2003

Open a presentation or start a new one.  
Choose Tools, Macro, Security



On the Security Level tab of the Security dialog box, select Medium.

This setting is only for **stallwanger.net** macros. For other Software Companies please ask what these macros do or ask your IT service provider if you are not sure.



Now you can use the macro in the file gantt.ppt „AddGantt“ .

## Settings for the Gantt Chart Generator:

### Main Time Axis



The Main Time Axis will be set by the fields „Begin

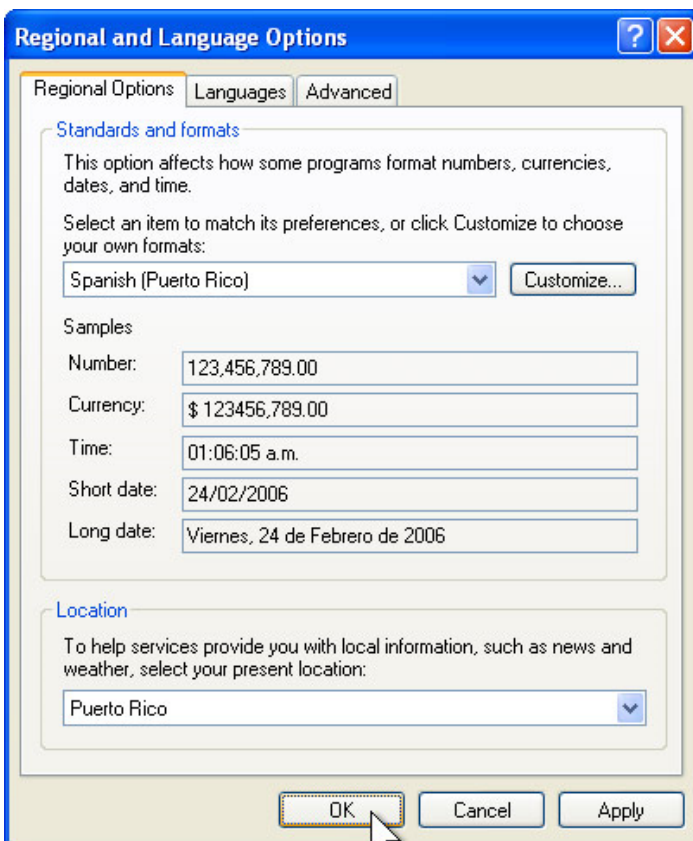
Start	<input type="text" value="1.1.2009"/>
End	<input type="text" value="31.12.2009"/>

The Date format is the same as you use in your Operating Systems “Regional and Language Options”.

For example in Windows XP you will find it in



This Point below is only interesting if you work with different Languages



With type you can specify how finely graduated the main timeline is to be set.

You will have following Options: day = d, week = w, month = m, year = y.

Type

Axis Lables gives you the choose to select your Main Time Axis Caption as ( z = numbers) as well as Names of the Dates (n = Name). If this Field is empty, then the default setting is the Name of the Dates.

Axis Lables

### Rows Count

With Rows Count you can select the maximum count of rows, that you will present in your presentation. If the maximum row counts is exceeded then the macro automatically create a new slide.

The existing Slide will not be deleted or overwritten.

Rows Counts

The “To the day” Option sets up your Shape width. If n is set as an option, the beam length as a function of the main timeline will create a “pretty” Presentation.

To the day

### Column Begin and End:

In Total you can create 4 additional columns.

If you want to see the Start and End-Dates in your Gantt Chart, then set the value to “j”.

View Values

Begin	End
01.01.2009	31.12.2009
05.01.2009	16.01.2009

If you need the Time-Gap between Start and End-Date, then set in the Field Create Date-Diff to “j”. The Gantt Chart Macro will create an Additional Column with the differences between the Dates.

Create Date-Diff.

Please note that the date difference is dependent on the format setting "format for duration". This is not a system format, but a mathematical calculation.

Format Dates

E.g.: if you select “d” then the difference between the will be calculated. For “m” only the month will be calculated. So if you have a big Project with more then 10 Years, then it makes sense to see the gaps in month and not in days.

Begin	End	Dauer	Jan
01.01.2009	31.12.2009	12	
05.01.2009	16.01.2009	0	

The last column is used to see the resources. In the excel-sheet you can enter each value, that is important for your presentation. So you can enter for e.g. Other Members, Companies, Teams or Budget-Values.

Resources

Aufgabe	Ressource	Jan
stallwanger it.dev		
Finanzierungsplan	it.dev	
Bank	stallwanger	
Darlehenslaufzeit	Bank	
it devl Project		

## Settings in MS Excel and format loyalty

### File-Names in Excel and PowerPoint must be the same

The PowerPoint Presentation and the Excel-File must have the same name so that the right data goes to the right presentation.

## Structure of the table

Our Rollout File contains an example Excel-Spreadsheet file. The Column A till F should used as is. If you want to use the Gantt Chart Generator please do not enter an addition column between A – F – otherwise the Marco will not work well.

A	B	C	D	E	F	G
Task	Begin	End	Days	Ressource	Animation	
stallwanger it.dev	1.1.2009	31.12.2009	364			
Finanierungsplan	05.01.2009	16.01.2009	11	it.dev		

## Format Loyalty

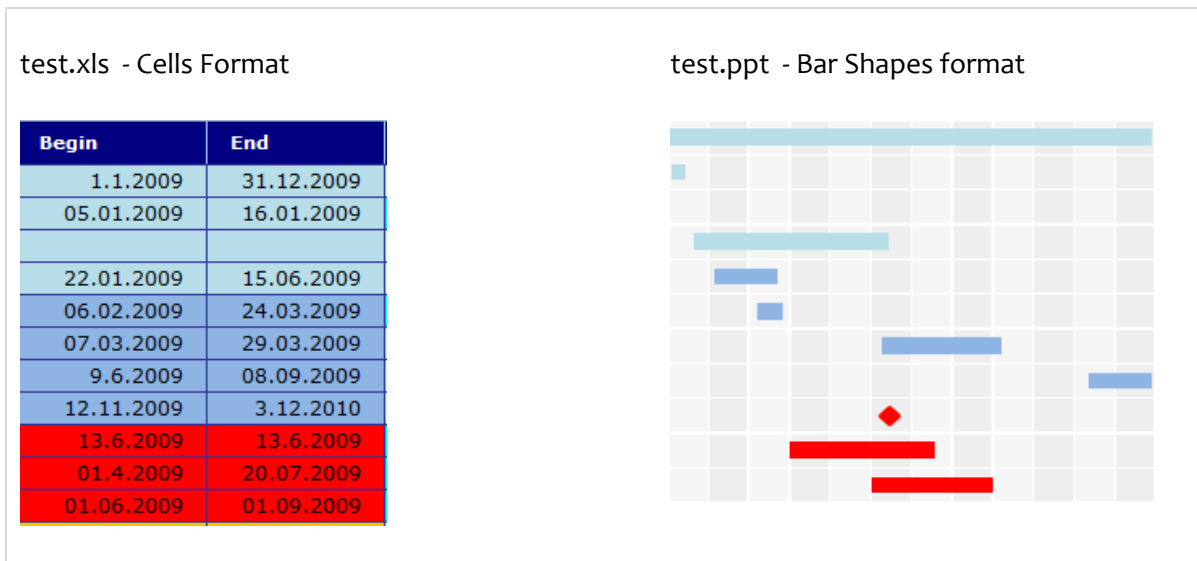
The Gantt Chart Generator picks up the same format, as you use in your Excel-File. If you change the Font format or if you use Bold, Italic, Underline – or if you change the colors – the Gantt Chart will also transfer this format into your PowerPoint file.

### Examples:

Format constancy of the Text shapes.

test.xls - Text Cells Format	test.ppt - Text shapes
<b>Aufgabe</b>	stallwanger it.dev
stallwanger it.dev	Finanierungsplan
Finanierungsplan	Bank
Bank	<u>Darlehenslaufzeit</u>
Darlehenslaufzeit	it.dev   project

## Format constancy of the bar shapes



## Milestones

Milestones will be created as Diamond Shapes. Remember, the definition of Milestones is a gap of zero or in other words if the difference between End Date – Begin Date = 0, then the macro automatically creates a Diamond shape. In all other cases you will get a rectangle shape object.

## Animation

In the Excel-Sheet you will find the column “Animation”. If you set a “x” in this field, the Gantt Chart Marco creates an Animation effect in PowerPoint for this task or this line.

For the rectangle shape the animation effect is “StretchLeft” – Speed “fast”. For Milestones you get the Effect “ZoomIn” – Speed fast.

## Professional Version

---

In the Professional Version, the Gantt Chart supports different Source-Types.

Typical Database systems and Formats:

- ORACLE, MS SQL Server, MS Transact-Server, MS ACCESS, XML, CSV

Reverse engineering:

- E.g.: if you change in the Presentation the width of the rectangle or change the Milestones to different positions, then the new dates will automatically stored in your Excel or Database file.

## Impress and Copyright ©

---

Copyright (C) 2007-2010, stallwanger it.dev | process and controlling. All rights reserved.

**stallwanger IT | process and controlling**

Heilmannstraße 7  
Germany - Munich

[www.stallwanger.net](http://www.stallwanger.net)